

## Technical Data Sheet:

### URAOIL 25.000

#### **DESCRIPTION:**

Insulating transformer oil plant designed on an easy-operating basis and variable flow rate and manufactured to perform the processes listed as follows in transformers or related equipment working with dielectric oil:

- . Filtration, dehydration and degassing of dielectric oil in batch or on-line modus, in order to achieve removal of water and moist, dissolved gas or air in the oil, drying of the transformer core and insulation, particle content decrease, etc.
- . Intensive drying of the core via hot-oil spray or other similar methods, by using appropriate accesories not included in this proposal (e.g. nozzles)
- . Filling of new and used transformers or related equipmet with dielectric oil.
- . Conditioning or improving the phisical properties (breakdown voltage, water content, particle content) of new and used insulating oil either naphtenic or paraffin based mineral oils, inhibited or non inhibited and passivated (eg. NYNAS TAURUS, X and latest developed mineral branches, SHELL DIALA D, DIALA B, etc.)

The flow rate offered may be varied according to the user's convenience and criteria from 1.000 to 25.000 l/h. This unit is therefore suitable for the processing of any capacity of mineral oil and its performance time will be directy related to the amount of fluid to be treated and the results expected.

The plant is suitable for the obtainance in new dielectric oil considering initial water content of 50 ppm and air content of 10% , of the following values in the parameters:

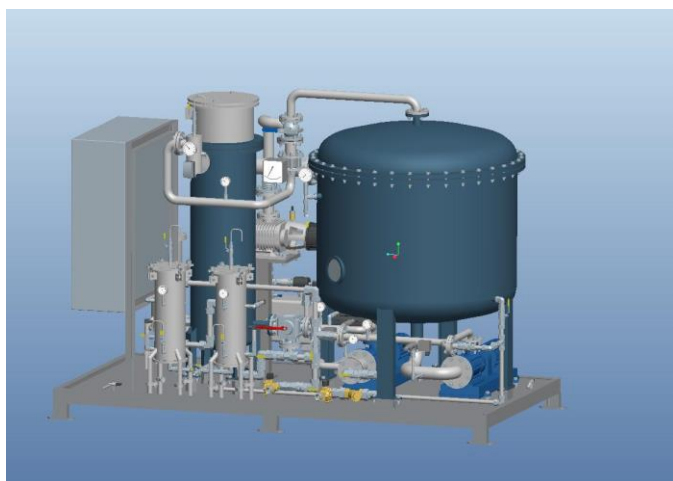
- . Water content, < 2 mg/Kg.
- . Air content, < 0,04% vol.

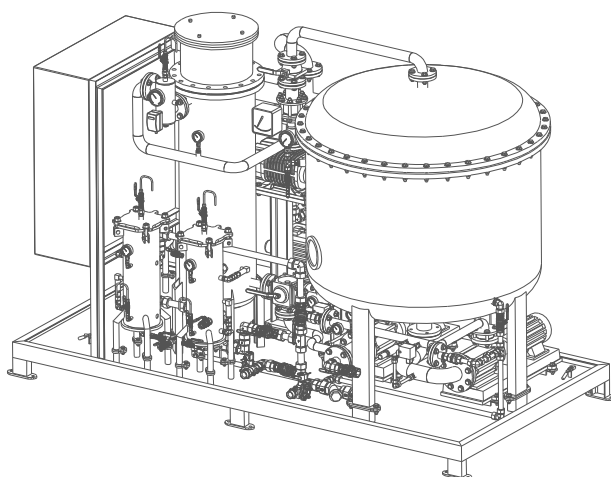
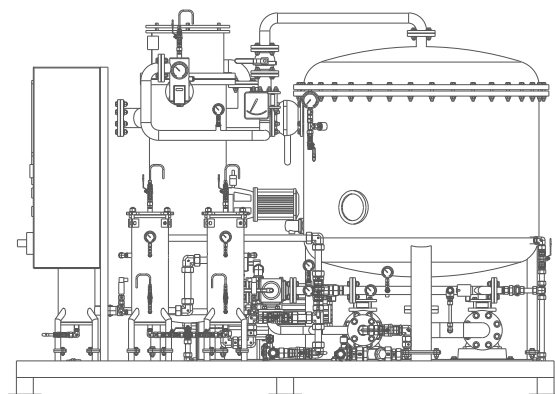
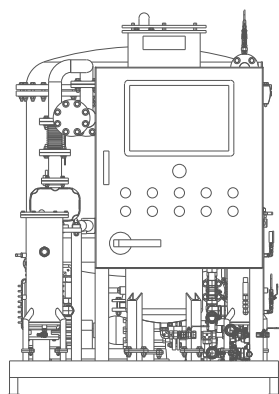
### Technical data.-

Variable flow rate	1000-25.000 l/h
Operating vacuum	1 mbar
Vacuum pump	500 m <sup>3</sup> /h <sup>1</sup>
Oil heater	200 kW
Heating capacity of oil heater, 4 stages	4 x 50 kW
	3 x 400 V, 50 Hz
Electrical equipment as per	IEC Standard
Total power consumption approx.	230 kW

Connections to oil treatment plant	
Oil inlet	Quick coupling DN 1 ½"
Oil outlet	Quick coupling DN 1 ½"
Max. oil inlet pressure	3 bar

Painting of the plant	Blue/grey
-----------------------	-----------





Width	3.200 mm
Deph	1.600 mm
Height	2.270 mm
Weight	3.000 Kg aprox.