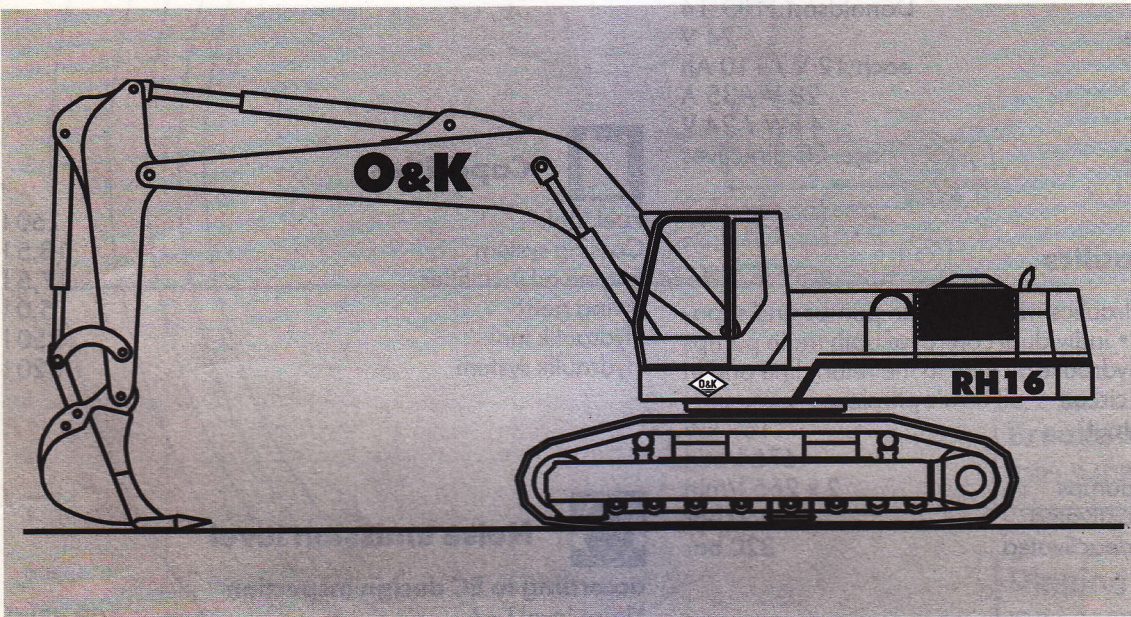


Technical data

Hydraulic crawler excavator

RH 16



Operating weight	up to 39,7 t
Engine output	178 kW
Buckets	1,05 - 2,08 m ³ (SAE)

- PMS 3 circuit hydraulics
- Dual-stage engine speed reduction
- Selection of operating modes
- Power boost operation
- Mechanically adjustable undercarriage width



O&K
Orenstein & Koppel



Engine

O&K diesel engine (make: Deutz) BF6 M 1013 CP
 Water-cooled • exhaust turbo charger • integrated cooling system for lube oil and coolant • monitoring of coolant level and temperature • pressure and temperature control with visual and acoustic warning signal • electric engine speed adjustment • electric engine stop via key switch.

Engine output ISO 9249	178 kW / 2 100 rpm
Effect. perform. ISO 3046/1 - IFN	169 kW / 2 100 rpm
Cylinder/displacement	6 / 7100 cm ³
Bore/stroke	108 mm / 130 mm
Air filter	Donaldson FHG 14
Machine voltage	24 V
2 batteries	each 12 V / 110 Ah
Alternator	28 V / 35 A
Starter motor	4 kW / 24 V
Exhaust emissions	acc. EC directives



Hydraulics

PMS-3-circuit hydraulics with two main pumps and separate swing pump • individual control of both main pumps • double flow • hydraulic oil filter in the return line and in the servo control circuit • oil flow optimizer.

Total hydraulic output	169 kW
Total oil flow	675 l/min
Oil flow working pumps	2 x 265 l/min
Pressure booster activated	360 bar
Pressure booster deactivated	320 bar



Regulation and control system

Electronic load limit governing • temperature monitoring of engine and hydraulic oil • automatic engine-speed adjustment • selection system for operational modes (HEAVY - ECO - LIFT) • controlled warm-up phase • main adjustment in ECO mode • 6 power modes of engine and pumps.



Swing gear

Swing pump and swing motor in closed circuit for swing-off or decelerating of uppercarriage without losses • automatic multiple disc holding brake • encased lifetime lubricated ball-bearing.

Swing torque	118 kNm
Swing speed	0 - 7,3 rpm
Pressure	390 bar



Operator's cabin

All around safety glazing • sky light • 3-stage fan • anti-freeze vents for foot space and front window • central-display for all control and monitoring functions • deluxe operator's seat • control levers according to SAE recommendations • individually adjustable side panels • installation of radio/cassette player prepared • ergonomically designed servo-control levers.

Width	960mm
-------	-------



Drive unit

Individual drive unit for each crawler unit • rock guards for variable flow hydraulic motors, travel gear and travel retarder valve within the length girders • travel brake • track guard • low wear crawler units with tensioning devices • sealed track pin bearings • lifetime lubricated track and support rollers.

Max. drawbar pull with pressure booster	380 kN
Max. travelling speed	5 km/h
Crawler track size	D 7F
Track roller / support rollers	8 / 2
Track pads per unit	50



Capacities

Fuel tank	760 l
Cooling system	18,5 l
Engine oil incl. filter	17,5 l
Swing gear	5,0 l
Hydraulik tank	350 l
Hydraulik system	520 l



Noise emission level

according to EC design inspection

Noise level LwA	108 dB(A)
Noise level LpA (operator's seat)	74 dB(A)

Equipment

Reduced maintenance due to hardened and corrosion-protected bearing pins, low-wear bearing bushings, sealed bearings and easily accessible lubricating grease distribution for base boom • hydraulic cylinders at both sides with joint bearings.

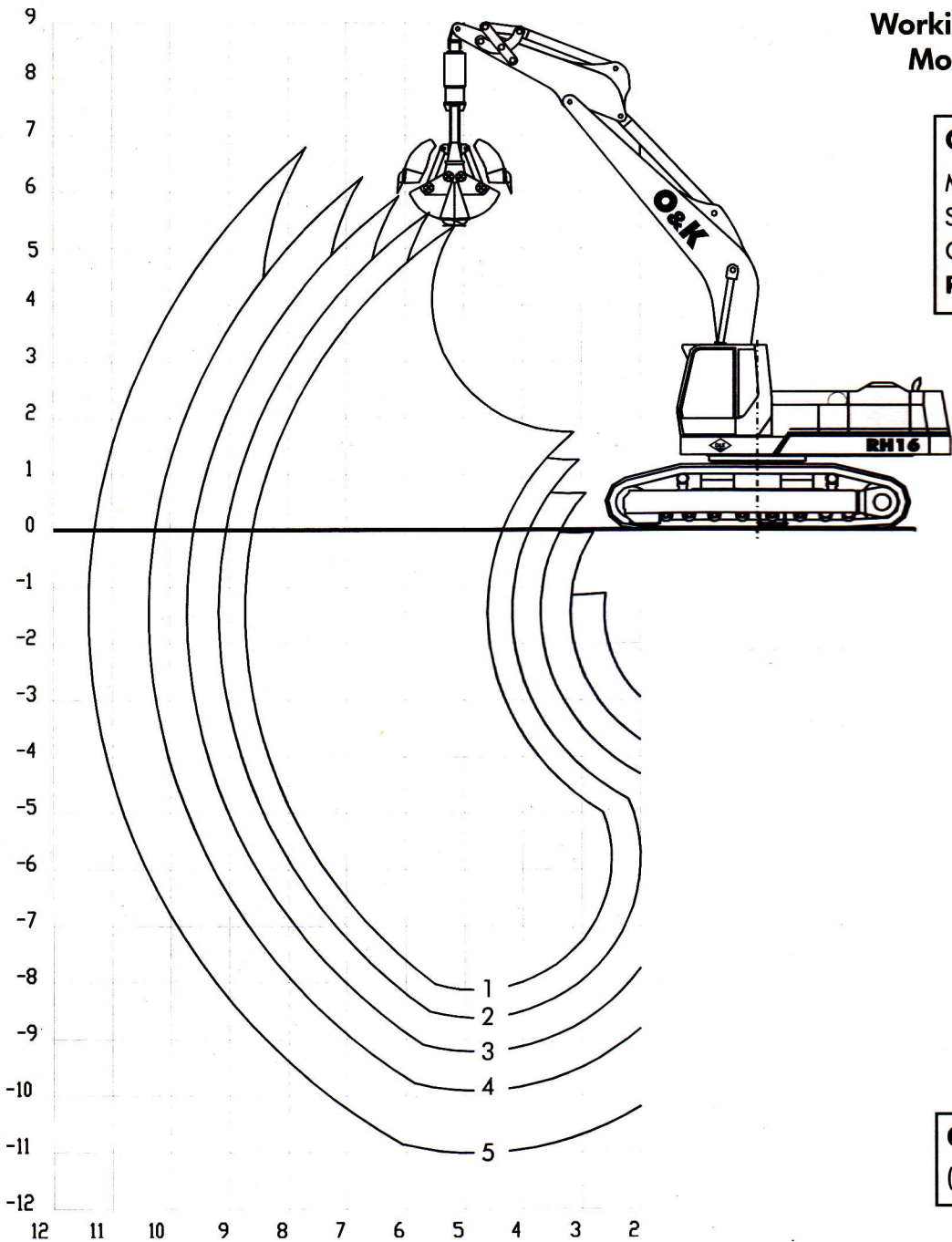
Options

Selection

Biodegradable hydraulic oil • auxiliary heating • fuelling device • track guide in center of undercarriage.

CE-mark according to EC-machine regulations.
TÜV-certificate concerning compliance with **DIN ISO EN 9001**. **Load handling permitted with installed overload warning device and pipe burst protection valve only.**

**Working range with grab
Monobloc boom 6,2 m**

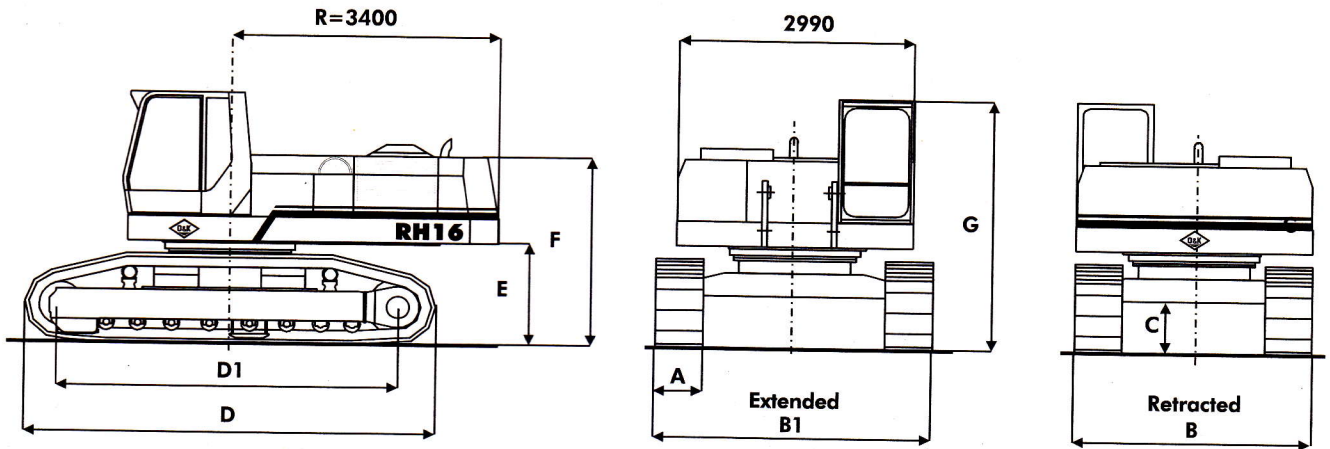


Operating weights
 Monobloc boom 6,2 m
 Stick 2,3 m
 Grab 1,10 m³ CECE
RH 16 LC 600 37,9 t

Closing force
 (DIN 24086) 134 kN

Stability acc. ISO 10567			Digging grab	
Bucket capacity	CECE	m ³	0,90	1,10
	Bucket width	mm	1 000	1 000
	Teeth	number	7	7
	Weight	kg	1 885	2 150
RH 16 VLC 600	Stick	to...m	4,1	4,1

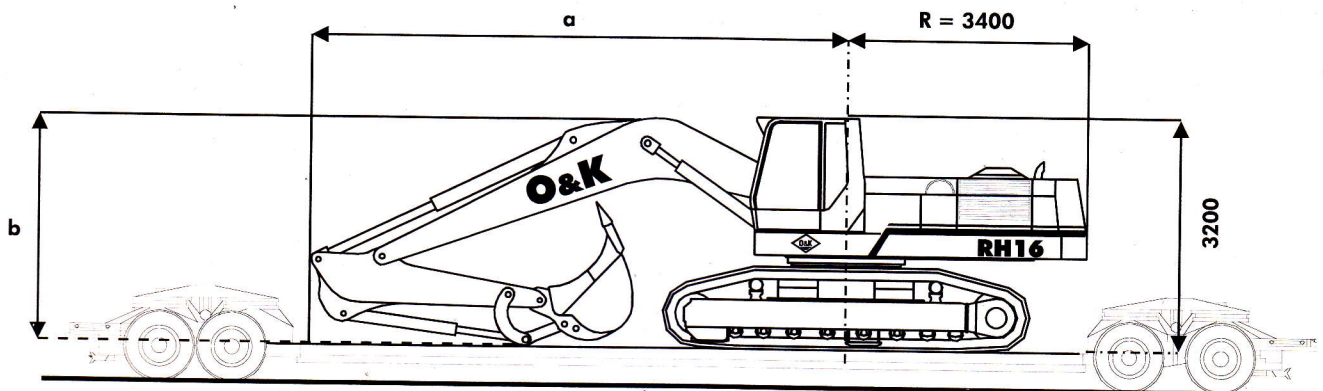
Dimensions



	A	B	B1	C	D	D1	E	F	G
RH 16 VLC 600	600	3 000	3 500	690	5 180	4 255	1 250	2 380	3 200
RH 16 VLC 750	750	3 150	3 650	690	5 180	4 255	1 250	2 380	3 200



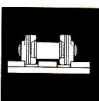

Transport dimensions Monobloc boom

Sticks	a	b
2,3 m	7 700	3 300
2,8 m	7 700	3 300
3,4 m	7 700	3 300
4,1 m	7 800	3 400
5,2 m	7 200	4 900



Dimensions in mm

Weights

	 Basic machine	 with equipment	 Track size	 Ground pressure
RH 16 VLC 600	31,9 t	bis 38,3 t	D 7 F	0,70 kg/cm ²
RH 16 VLC 750	32,7 t	bis 39,1 t	D 7 F	0,58 kg/cm ²