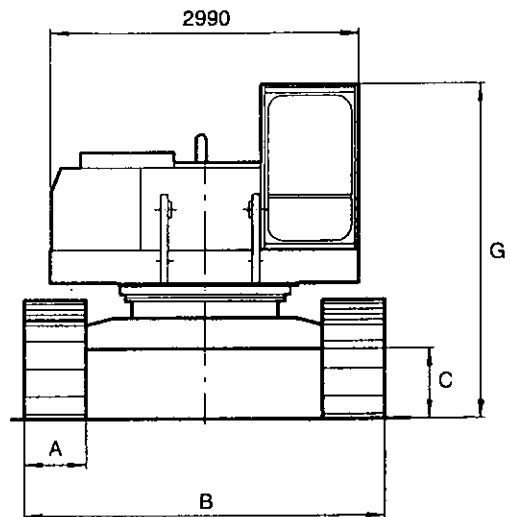
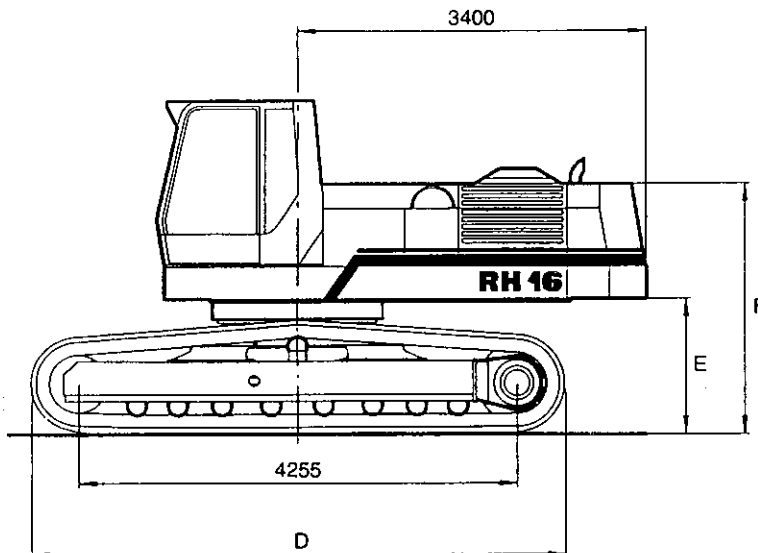





Hydraulic Excavator

Technical Data

Preliminary

RH 16



	A	B	B1	C	D	E	F	G			
RH 16 - 600	600	3000	—	475	5180	1240	2370	3200	29,9 t	up to 37,9	D7C - 0,67 kg/cm ²
RH 16 - LC 600	600	3200	—	475	5180	1240	2370	3200	26,0 t	up to 38,1 t	D7C - 0,67 kg/cm ²
RH 16 - LC 750	700	3300	—	475	5180	1240	2370	3200	26,4 t	up to 38,9 t	D7C - 0,55 kg/cm ²
RH 16 - LC 850	850	3450	—	475	5180	1240	2370	3200	26,9 t	up to 39,6 t	D7C - 0,50 kg/cm ²



Engine

Water-cooled O&K diesel (KHD) BF6 M 1013 CP
 Output ISO 9249 170 kW at 2000 rpm
 Stall output ISO 3046/1 - IFN - 169 kW at 2000 rpm
 Exhaust emission acc. EURO 1
 Tank capacity 660 l
 Donaldson air filter FRG 18
 2 batteries each 12 V / 110 Ah
 Three-phase alternator 28 V/55 A
 Electrics 24 V

Engine rubber mounted • Exhaust turbocharger • Charge air cooling • Fuel an lube oil filters • Oil pressure warning • Integrated cooling circuits for lube oil and coolant • Coolant level and temperature monitors • Electric rev. adjustment • Engine stop from ignition switch • Automatic rev. reduction.



Hydraulics

PMS with 3-Circuit Hydraulics and Hydraulic Servo Control

Variable-displacement twin pump with individual governing • Pressure cut-off and variable pump output • Variable-displacement pump with torque control
 Total hydraulic output with PMS 169 kW
 Total oil flow 641 l/min
 Pressure with force booster on 360 bar
 Pressure with force booster off 320 bar
 With force booster off, cylinder forces and drawbar pull decrease by 11 %.

PMS - Pump Managing System - microprocessor controlled governing and monitoring system • High-precision pump • governing depending upon required output • Selection of 3 output/speed settings • No overloading of engine by electronic load limit governor • 3-pump hydraulics with booster, two working pumps, one sperate swing pump • Three movements independent of each other possible simultaneously • Working pumps with individual governing • If only one consumer is being actuated, both working pumps automatically double-flow to feed it • Proportional control depending upon movement of joystick in the cab • Extremely sensitive, no-loss working movements • Hydraulic oil cooler with thermostatically controlled fan • High-pressure filter • Hydraulic cylinders with wiper rings and plastic guide bands • Pivot bearings on both ends • End-of-stroke cushioning • Cylinder barrels of seamless tube with burnished walls • Chrome plated hardened piston rods.



Noise emission

acc. ECC Design directive
 Noise power level LwA 108 dB(A)
 Noise pressure level Lpa (cab) 74 dB(A)



Swing gear

Closed-loop swing circuit

Superstructure swing torque 117.5 kNm (12.0 tm)
 Superstructure swing speed 0 - 7.4 rpm
 Swing circuit pressure 390 bar
 Swing pump and swing motor in closed loop providing • no-loss swing-off and braking of superstructure with energy recycling • Swing motor on compact planetary gearbox with integrated, automatic multi-disk superstructure holding brake • Enclosed, inner-gearred ball swing bearing with long-term lubrication.



Cab

Rubber mountig for noise supression

Cab width 960 mm
 Cab ergonomically designed and layed out • All-round safety glazing • Multi-setting windscreen • Electric, parallel-sweep wiper with washer • Skylight • Cab door with automatic catch • Engine-coolant heater with multi-stage fresh air blower • Combi-instrument with indicators and warnings • Hourmeter • Dust-proof switches • Large shelf for operator's belonging • De-luxe adjustable seat with joysticks in front of armrests for working and swing functions • Pedals with extra levers for travel functions • Joysticks with SAE shift patterns • Safety lever to cut out all excavator functions.



Track drive

Max. drawbar pull 330 kN (33.5 tonnes)
 Max. travel speed 0 - 3.1 km/h
 Track/support rollers 8/1
 Individual hydraulic drive for each track • Travelling brake • Axial-piston motors with travel retarder valve protected behind rock guards inside track profile • Low maintenance D 7 crawler gear with track tensioner • Sealed track chain pins • Lifetime lubricated track and support rollers • Multi-grouser pads.

Front-end equipment

Strong, box section booms and sticks • Steel castings in bearing pivot points • Hardened, corrosion-protected pins for minimum maintenance • Low-wear bearing bushings • Sealed bearings and easily accessible grease distributor for basic boom.

Options

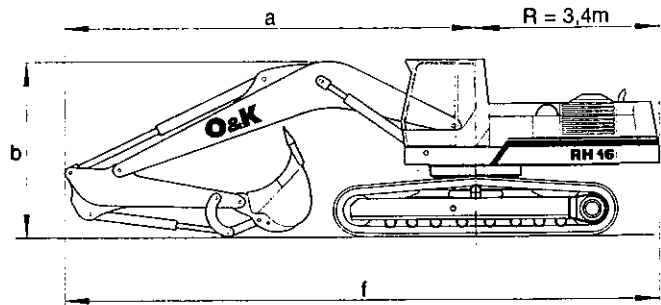
Selection:

Buckets of high-strength fine-grain steel • Cutting edges with drop-forged teeth • Wear strips • Tooth locks • Cab with up-and-over windscreen • Environmentally friendly hydraulic oil • Rock guard • Stand heater • Refueller system • Radio/cassette player w. installation.

When the Excavator is used as a lifting device, the installation of a pipe-burst safety device and an overload warning facility is required to obtain the "CE symbol"

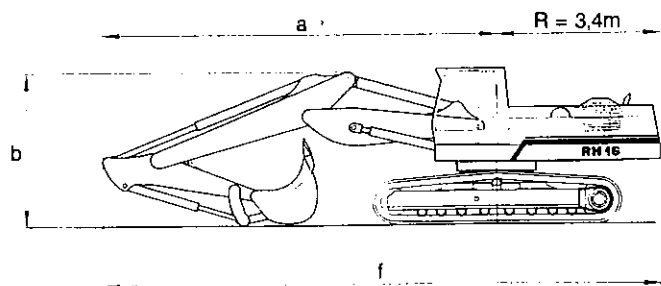
Conformity with EC machine directive permits the use of the **CE symbol**
 German TÜV-certification of observance of ISO 9001/EN29001

Monobloc boom, backhoe



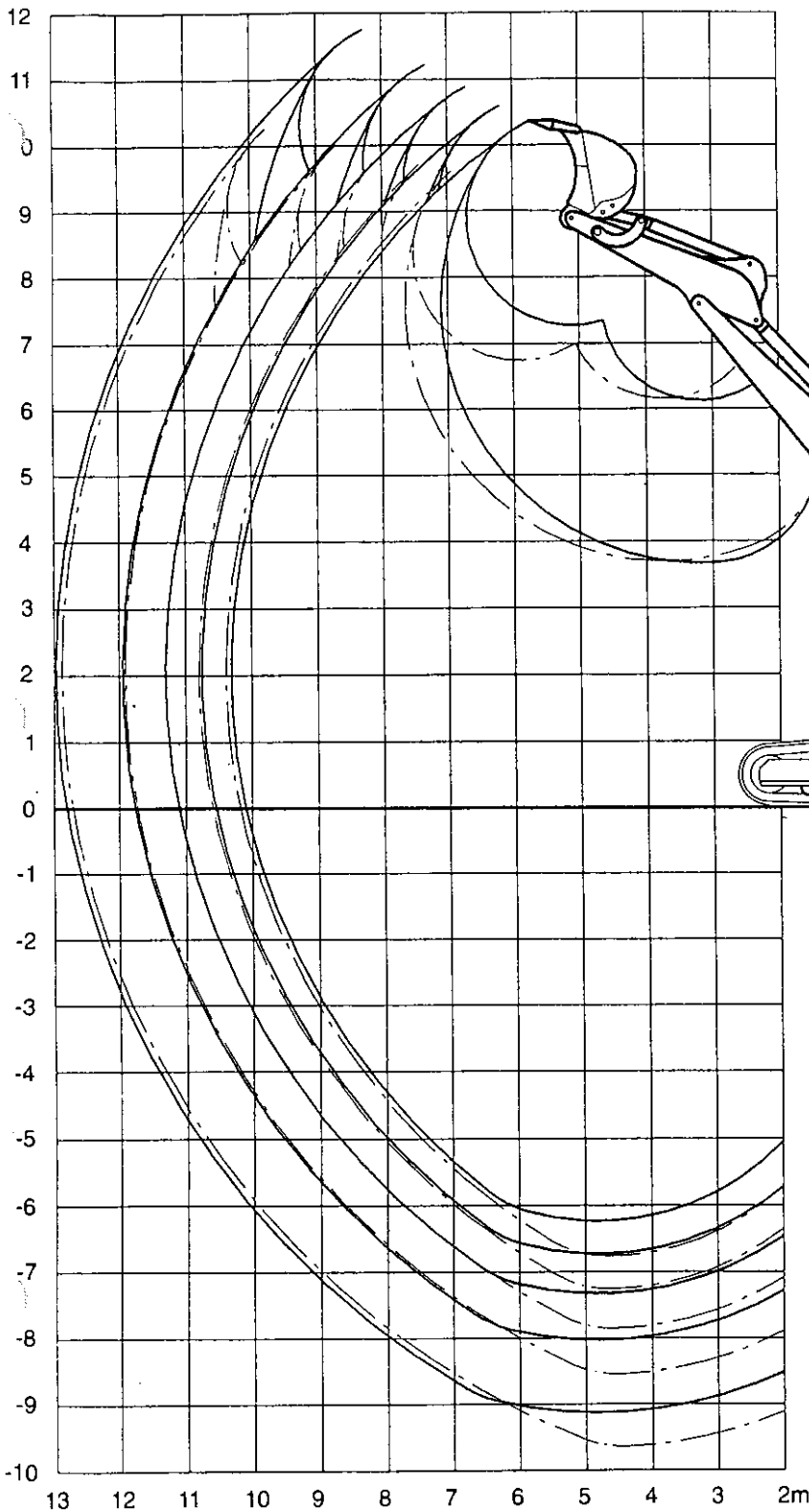
a	7,7 m	7,7 m	7,7 m	7,8 m	7,1 m
b	3,4 m	3,4 m	3,4 m	3,5 m	5,1 m
f	11,0 m	11,0 m	11,0 m	11,1 m	10,4 m
Stick	2,3 m	2,8 m	3,4 m	4,1 m	5,2 m

Multi-position boom, backhoe

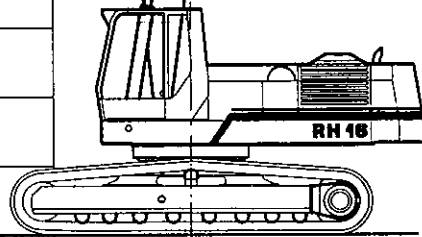


a	7,8 m	7,9 m	7,9 m	7,9 m
b	3,3 m	3,3 m	3,4 m	3,7 m
f	10,9 m	11,0 m	11,0 m	11,0 m
Stick	2,2 m	2,8 m	3,4 m	4,2 m

Backhoe configuration Monobloc boom



Monoausleger 6,2 m



DIN 24086

Sticks	crowd forces	Breakout forces
1) 2,3 m	220 kN (196 kN*)	247 kN (220 kN*)
2) 2,8 m	197 kN (175 kN*)	247 kN (220 kN*)
3) 3,4 m	173 kN (154 kN*)	247 kN (220 kN*)
4) 4,1 m	155 kN (138 kN*)	247 kN (220 kN*)
* without booster		

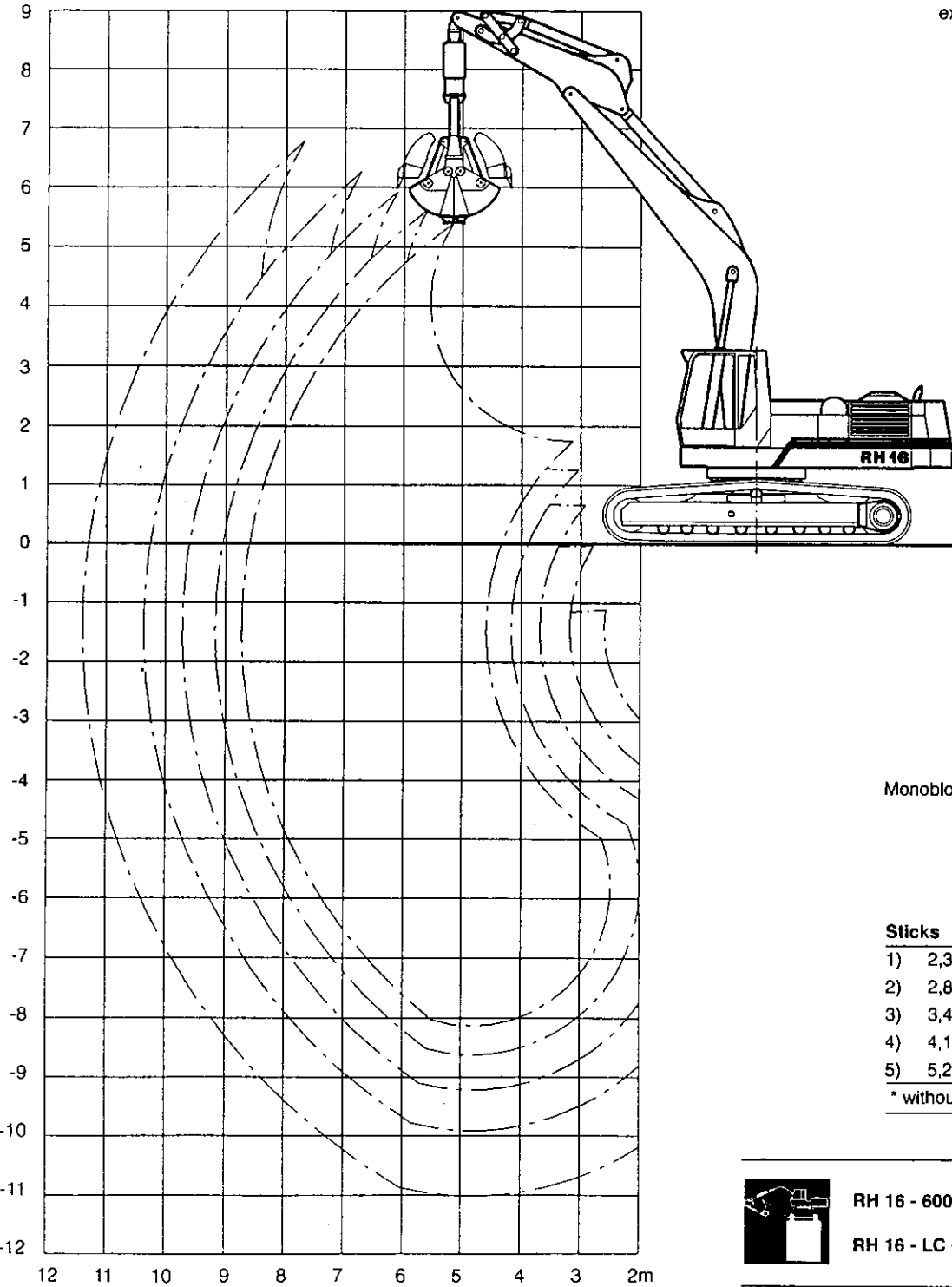
	RH 16 - 600	Monobloc boom 6,2 m	36,3 t
	RH 16 - LC 600	Stick 2,3 m Backhoe 2,08 m³ SAE	36,5 t

Stability, DIN 24087

100% bucket filling at max. reach. Material weight = 1,8 t/m³ resp. *) = 1,6 t/m³ Total swing range 360°			Backhoe					Rock hoe					
	capacity	CECE	m³	1,85	1,60	1,30	1,20	0,95					
	Backhoe width		mm	1630	1600	1400	1200	900					
	Teeth		Piece	6	6	5	5	4					
	Weight		kg	1430	1440	1290	1180	990					
RH 16 - 600	Monobloc boom	Stick length to...m		2,3	2,8	2,8	4,1	5,2					
RH 16 LC - 600	Monobloc boom	Stick length to...m		2,8	2,8	4,1	4,1	5,2					

Grab configuration Monobloc boom

With grab extensions fitted,
digging depth increases, dump
height decreases with the relevant
extensions length.



Monobloc boom 6,2 m - - -

DIN 24086

Sticks	Closing forces
1) 2,3 m	134 kN (119 kN*)
2) 2,8 m	134 kN (119 kN*)
3) 3,4 m	134 kN (119 kN*)
4) 4,1 m	134 kN (119 kN*)
5) 5,2 m	134 kN (119 kN*)

* without booster

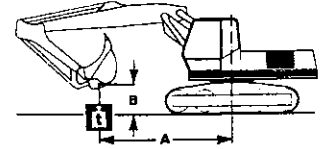
	RH 16 - 600	Monobloc boom 6,2 m	36,9 t
	RH 16 - LC 600	Stick 2,3 m Grab 1,10 m ³ CECE	37,1 t

Stability, DIN 24087

100% grab filling at max. reach. Material weight = 1,8 t/m ³ resp. " = 1,6 t/m ³ Total swing range 360°				Digging grab	
	Capacity	CECE	m ³		
	Grab width		mm	1500	900
	Teeth	piece	none	9	9
	Weight		kg	1325	880
RH 16 -600	Monobloc boom	Stick length to...m		3,4	3,4
RH 16 LC -600	Monobloc boom	Stick length to...m		4,1	4,1

Lifting capacities (t) RH 16 • acc. ISO 10567

Monobloc boom - stick - backhoe 0.95 m³ (990 kg) • Monobloc boom - stick - load hook (lifting capacity 20 t)
 Acc. ISO 10567, values stated represent 75 % of static tip load or 87 % of hydraulic lift force. Force booster on. Values valid with backhoe or load hook attached. Lifting capacity of safety load hook (backhoe or linkage): 18t.



- a Over swing range of 360° on firm, level ground.
- b Over front/back end +/- 15°. The values can only be reached at operator's own risk and are not safeguarded by the SWL system
- * Limited hydraulically.

The excavator's lifting capacity is limited by stability, hydraulic lift forces or the max. permissible load on the load hook. Overload guard and pipe burst valve are necessary. If other attachments are chosen instead of backhoe, weight differences are to be taken into consideration.

		RH 16 - 600 Monobloc boom - Stick - Backhoe 0,95 m ³ (990 kg)												RH 16 - LC 600 Monobloc boom - Stick - Backhoe 0,95 m ³ (990 kg)																
Stiele	B	A		4,5 m		6,0 m		7,5 m		9,0 m		10,5 m		max.		4,5 m		6,0 m		7,5 m		9,0 m		10,5 m		max.				
		a	b	a	b	a	b	a	b	a	b	a	b	a	b	a	b	a	b	a	b	a	b	a	b	a	b			
2,3 m	4,5 m			8,2	8,3*	5,7	7,2*																							
	3,0 m ↑	11,5	13,6*	7,6	9,7*	5,4	7,8*									13,6	13,6*	8,9	9,7*	6,3	7,8*									
	1,5 m ↑	10,4	15,6*	7,0	10,8*	5,0	8,4*								3,8	6,9*	12,5	15,6*	8,3	10,8*	6,0	8,4*					4,5	6,9*		
	0 m	9,9	15,9*	6,6	11,3*	4,8	8,7*										12,0	15,9*	7,9	11,3*	5,7	8,7*								
	1,5 m ↓	9,8	15,2*	6,5	11,2*	4,7	8,5*										12,0	15,2*	7,8	11,2*	5,6	8,5*								
	3,0 m ↓	10,0	13,6*	6,5	10,2*												12,1	13,6*	7,8	10,2*										
2,8 m	4,5 m			7,5*	7,5*	5,6	6,5*	4,0	5,8*										7,5*	7,5*	6,5*	6,5*	4,7	5,8*						
	3,0 m ↑	11,6	12,3*	7,5	8,9*	5,3	7,2*	3,8	6,3*								12,3*	12,3*	8,9	8,9*	6,2	7,2*	4,5	6,3*						
	1,5 m ↑	10,3	14,6*	6,9	10,1*	4,9	7,9*	3,6	6,6*						3,4	5,9*	12,5	14,6*	8,2	10,1*	5,8	7,9*	4,4	6,6*			4,0	5,9*		
	0 m	9,7	15,5*	6,4	10,9*	4,6	8,3*	3,5	6,7*								11,8	15,5*	7,7	10,9*	5,6	8,3*	4,2	6,7*						
	1,5 m ↓	9,5	15,2*	6,2	10,9*	4,5	8,3*										11,6	15,2*	7,5	10,9*	5,4	8,3*								
	3,0 m ↓	9,6	13,9*	6,2	10,2*	4,5	7,7*										11,7	13,9*	7,5	10,2*	5,4	7,7*								
3,4 m	4,5 m					5,8	6,0*	4,1	5,5*												6,0*	6,0*	4,8	5,5*						
	3,0 m ↑	11,0*	11,0*	7,8	8,2*	5,4	6,7*	3,9	5,9*								11,0*	11,0*	8,2*	8,2*	6,3	6,7*	4,6	5,9*						
	1,5 m ↑	10,8	13,8*	7,1	9,6*	5,0	7,5*	3,7	6,3*						3,0	4,6*	13,0	13,8*	8,4	9,6*	5,9	7,5*	4,4	6,3*			3,7	4,6*		
	0 m	9,9	15,3*	6,5	10,6*	4,7	8,1*	3,5	6,6*								12,0	15,3*	7,8	10,6*	5,6	8,1*	4,2	6,6*						
	1,5 m ↓	9,5	15,4*	6,2	10,9*	4,5	8,3*	3,4	6,6*								11,6	15,4*	7,5	10,9*	5,4	8,3*	4,1	6,6*						
	3,0 m ↓	9,5	14,6*	6,1	10,6*	4,4	8,0*										11,6	14,6*	7,4	10,6*	5,3	8,0*								
4,1 m	4,5 m					5,3*	5,3*	4,2	4,9*												5,3*	5,3*	4,9	4,9*						
	3,0 m ↑			7,2*	7,2*	5,5	6,1*	4,0	5,4*	2,9	4,0*									7,2*	7,2*	6,1*	6,1*	4,7	5,4*	3,5	4,0*			
	1,5 m ↑	11,2	12,4*	7,3	8,8*	5,1	7,0*	3,7	5,9*	2,7	4,6*				2,7	3,5*	12,4*	12,4*	8,6	8,8*	6,0	7,0*	4,4	5,9*	3,3	4,6*	3,2	3,5*		
	0 m	10,1	14,5*	6,6	10,0*	4,7	7,7*	3,5	6,3*								12,3	14,5*	7,9	10,0*	5,6	7,7*	4,2	6,3*						
	1,5 m ↓	9,5	15,3*	6,2	10,7*	4,4	8,1*	3,3	6,5*								11,6	15,3*	7,5	10,7*	5,4	8,1*	4,0	6,5*						
	3,0 m ↓	9,3	15,0*	6,0	10,7*	4,3	8,1*	3,3	6,2*								11,4	15,0*	7,3	10,7*	5,2	8,1*	4,0	6,2*						
5,2 m	4,5 m							4,0*	4,0*	3,1	4,0*											4,0*	4,0*	3,7	4,0*					
	3,0 m ↑					5,0*	5,0*	4,1	4,6*	3,0	4,3*										5,0*	5,0*	4,6*	4,6*	3,6	4,3*				
	1,5 m ↑			7,3*	7,3*	5,3	6,0*	3,8	5,2*	2,8	4,6*			2,2	2,3*				7,3*	7,3*	6,0*	6,0*	4,5	5,2*	3,4	4,6*	2,3*	2,3*		
	0 m	10,7	12,9*	6,9	8,9*	4,8	6,9*	3,5	5,7*	2,6	4,9*						12,9	12,9*	8,2	8,9*	5,8	6,9*	4,3	5,7*	3,2	4,9*				
	1,5 m ↓	9,7	14,6*	6,3	10,1*	4,5	7,6*	3,2	6,1*	2,5	5,1*						11,9	14,6*	7,6	10,1*	5,4	7,6*	4,0	6,1*	3,1	5,1*				
	3,0 m ↓	9,2	15,1*	6,0	10,5*	4,2	7,9*	3,1	6,3*	2,4	4,3*						11,4	15,1*	7,3	10,5*	5,2	7,9*	3,9	6,3*	3,0	4,3*				
		RH 16 - 600 Monobloc boom - Stick - Load hook												RH 16 - LC 600 Monobloc boom - Stick - Load hook																
2,3 m	4,5 m			13,2	13,6*	8,8	10,5*	6,3	9,0*												13,6*	13,6*	10,1	10,5*	7,3	9,0*				
	3,0 m ↑	12,0	16,7*	8,3	11,8*	6,1	9,6*										14,2	16,7*	9,6	11,8*	7,0	9,6*								
	1,5 m ↑	11,3	12,2*	7,9	12,7*	5,9	10,0*							4,8	8,6	12,2*	12,2*	9,2	12,7*	6,8	10,0*							5,6	8,7*	
	0 m	11,2	17,3*	7,6	12,9*	5,7	10,1*										13,4	17,3*	8,9	12,9*	6,7	10,1*								
	1,5 m ↓	11,3	16,1*	7,6	12,4*	5,7	9,6*										13,4	16,1*	8,9	12,4*	6,6	9,6*								
	3,0 m ↓	11,4	14,0*	7,7	10,8*												13,6	14,0*	9,0	10,8*										
2,8 m	4,5 m			8,7	9,6*	6,3	8,4*														9,6*	9,6*	7,2	8,4*						
	3,0 m ↑	12,1	15,3*	8,2	11,0*	6,0	9,0*	4,6	7,9*								14,3	15,3*	9,5	11,0*	6,9	9,0*	5,3	7,9*						
	1,5 m ↑	11,2	17,2*	7,7	12,1*	5,7	9,6*	4,4	8,1					4,4	7,9	13,4	17,2*	9,0	12,1*	6,7	9,6*	5,2	8,1*			5,1	8,0*			
	0 m	10,9	17,3*	7,4	12,6*	5,5	9,9*										13,0	17,3*	8,7	12,6*	6,5	9,9*								
	1,5 m ↓	10,9	16,4*	7,3	12,3*	5,5	9,6*										13,0	16,4*	8,6	12,3*	6,4	9,6*								
	3,0 m ↓	11,0	14,6*	7,4	11,1*	5,5	8,3*										13,2	14,6*	8,7	11,1*	6,5	8,3*								
3,4 m	4,5 m			8,9	8,9*	6,4	7,9*	4,8	7,3*												8,9*	8,9*	7,4	7,9*	5,5	7,3*				
	3,0 m ↑	12,6	14,0*	8,4	10,4*	6,1	8,6*	4,6	7,6*								14,0*	14,0*	9,7	10,4*	7,0	8,6*	5,4	7,6*						
	1,5 m ↑	11,5	16,5*	7,9	11,7*	5,8	9,3*	4,5	7,9*					4,0	6,7*	13,7	16,5*	9,2	11,7*	6,7	9,3*	5,2	7,9*			4,7	6,7*			
	0 m	11,0	17,3*	7,5	12,4*	5,6	9,7*	4,4	8,0								13,1	17,3*	8,8	12,4*	6,5	9,7*	5,1	8,0						
	1,5 m ↓	10,8	16,9*	7,3	12,5*	5,5	9,7*										12,9	16,9*	8,6	12,5*	6,4	9,7*								
	3,0 m ↓	10,9	15,5*	7,3	11,7*	5,5	9,0*										13,0	15,5*	8,6	11,7*	6,4	9,0*								
4,1 m	4,5 m					6,5	7,2*	4,9	6,7*												7,2*	7,2*	5,6	6,7*						
	3,0 m ↑	12,4*	12,4*	8,6	9,5*	6,2	8,0*	4,7	7,1*								12,4*	12,4*	9,5*	9,5*	7,2	8,0*	5,4	7,1*						
	1,5 m ↑	11,8	15,3*	8,0	11,0*	5,9	8,8*	4,5	7,6*					3,7	5,3*	14,0	15,3*	9,3	11,0*	6,8	8,8*	5,2	7,6*			4,3	5,3*			
	0 m	11,0	16,9*	7,5	12,0*	5,6	9,4*	4,3	7,9*								13,2	16,9*	8,8	12,0*	6,5	9,4*	5,1	7,9*						
	1,5 m ↓	10,7	17,1*	7,2	12,4*	5,4	9,7*	4,2	7,8								12,8	17,1*	8,5	12,4*	6,3	9,7*	5,0	7,8						
	3,0 m ↓	10,7	16,2*	7,1	12,0*	5,3	9,3*										12,8	16,2*	8,4	12,0*	6,2	9,3*								

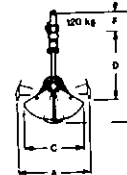
Weights end dimensions



		Monobloc boom	Stick				
System length	m	6,20	2,20	2,80	3,40	4,10	5,20
A	m	6,50	3,40	3,90	4,50	5,20	6,30
B	m	1,70	1,10	1,10	1,10	1,00	1,00
Weidth	m	0,80	0,56	0,60	0,60	0,60	0,60
Weight	kg	2650	1215	1390	1500	1630	2020
Toggle & linkage	kg		300	300	300	300	300
Cylinder	kg	500	260	260	260	260	260



		Backhoe	Rock backhoe			
Capacity (CECE)	m ³	1,85	1,85	1,60	1,30	0,95
Width	mm	1630	1600	1400	1200	900
Teeth	Piece	6	6	5	5	4
Weight	kg	1430	1440	1290	1290	990
A	m	1,85	1,85	1,85	1,85	1,85
B	m	1,30	1,30	1,30	1,30	1,30



		Digging grab	
Capacity (CECE)	m ³	1,10	0,90
Width	mm	1000	1000
Socket teeth	Stück	7	7
Weight	kg	1885	2150
A	m	2,15	2,00
B	m	3,30	3,50
C	m	1,75	1,55
D	m	2,30	2,50
F	m	0,43	0,43

*optional: screw teeth



O&K Orenstein & Koppel AG
 Postfach 17 02 18
 D-44061 Dortmund
 Tel. (231) 17 60-0
 Fax (231) 17 25 03/17 90 91
 Telex 822 222

Your partner:

